

T-FIT[®] Clean

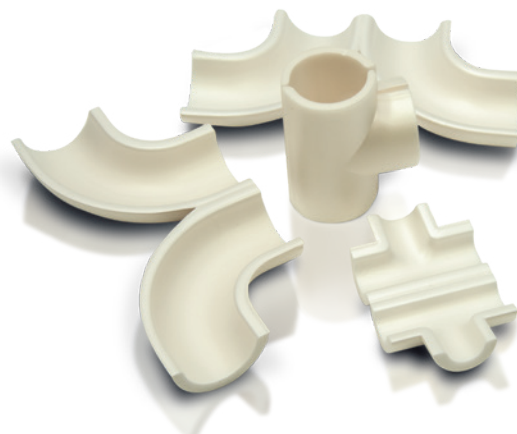
T-FIT[®] INSULATION

Fit to perform. Fit to last

Product information

Typical Values

T-FIT[®] Clean is manufactured from Zotefoams ZOTEK[®] F42 HT LS fine, closed cell foam, the only foam product to be specification tested to FM4910 Clean Room Materials Protocol. The values provided in this Product Information Sheet represent data gathered from random samples of our production of Zotek F42HTLS from which T-FIT Clean is produced and represent typical data. These are given to the best of our knowledge and should be considered as guidance only for selecting a suitable grade for a given application.



| Property | Test Standard | Typical Value |
|---|-----------------------|---|
| Material | | Manufactured from an FDA Compliant Kynar [®] based resin |
| Service Temperature | See Notes Below* | -112 °F to +320 °F |
| Thermal Conductivity | | |
| Mean temperature 32 °F | ISO 8301 | 0.0314 W/m.K (0.22 Btu.in/h.ft ² °F) |
| Mean temperature 77 °F | | 0.0347 W/m.K (0.24 Btu.in/h.ft ² °F) |
| Mean temperature 176 °F | | 0.0434 W/m.K (0.30 Btu.in/h.ft ² °F) |
| Fire Certification | | |
| Euroclass | EN13501-1 | B - s1, d0 |
| UL723 / ASTM E84 | Material Thickness | 1/8" 1" |
| | Flaming Spread Index | 0 10 |
| | Smoke Developed Index | 0 40-75 |
| AS 1530 | Gauge inches | Ignitability |
| | 0.2" | 0 |
| | 1" | 0 |
| | | Spread of flame |
| | | 0 0 |
| | | Heat Evolved |
| | | 0 0 |
| | | Smoke Dev |
| | | 1 0/1 |
| Water Vapor Transmission | ISO 1663 | 6500, μ Value |
| Outgassing | VDI 2083-P17 | 8.86 μg/g (ppm) |
| ISO-AMC class | ISO 14644-8** | -10 |
| Fungus Resistance | ASTM G21-15 | Full test complete No signs after 28 days |
| Factory Mutual 4910 Cleanroom Materials Flammability Test Protocol | | Specification Tested |

*These are extreme temperatures. For continuous use or advice on product specification with respect to condensation control please contact your local T-FIT[®] representative. ** Based on independent testing and commentary, full report available on request.

| Product Code | Description: T-FIT Clean - ASME BPE | Insulation Sizing ID | Product |
|---------------|---|----------------------|----------|
| ZAFCK99930 | ASME BPE 0.25" OD 6.35mm T-FIT Clean Insulating Straight 6.35mm THK | 0.25" | Straight |
| ZAFCK06381 | ASME BPE 0.375" OD 9.53mm T-FIT Clean Insulating Straight 6.35mm THK | 0.375" | Straight |
| ZAFCK06382 | ASME BPE 0.5" OD 12.70mm T-FIT Clean Insulating Straight 6.35mm THK | 0.5" | Straight |
| ZAFCK06383 | ASME BPE 0.75" OD 19.05mm T-FIT Clean Insulating Straight 6.35mm THK | 0.75" | Straight |
| ZAFCK06384 | ASME BPE 1.0" OD 25.40mm T-FIT Clean Insulating Straight 6.35mm THK | 1.0" | Straight |
| ZAFCK06385 | ASME BPE 1.5" OD 38.10mm T-FIT Clean Insulating Straight 6.35mm THK | 1.5" | Straight |
| ZAFCK06386 | ASME BPE 2.0" OD 50.8mm T-FIT Clean Insulating Straight 6.35mm THK | 2.0" | Straight |
| ZAFCK06387 | ASME BPE 2.5" OD 63.50mm T-FIT Clean Insulating Straight 6.35mm THK | 2.5" | Straight |
| ZAFCK06388 | ASME BPE 3.0" OD 76.20mm T-FIT Clean Insulating Straight 6.35mm THK | 3.0" | Straight |
| ZAFCK06787 | ASME BPE 3.5" OD 88.90mm T-FIT Clean Insulating Straight 6.35mm THK | 3.5" | Straight |
| ZAFCK06522 | ASME BPE 4.0" OD 101.6mm T-FIT Clean Insulating Straight 6.35mm THK | 4.0" | Straight |
| ZAFCK99930-NT | ASME BPE 0.25" OD 6.35mm T-FIT Clean Insulating Straight 6.35mm THK(No Tape) | 0.25" | Straight |
| ZAFCK06381-NT | ASME BPE 0.375" OD 9.53mm T-FIT Clean Insulating Straight 6.35mm THK(No Tape) | 0.375" | Straight |
| ZAFCK06382-NT | ASME BPE 0.5" OD 12.70mm T-FIT Clean Insulating Straight 6.35mm THK(No Tape) | 0.5" | Straight |
| ZAFCK06383-NT | ASME BPE 0.75" OD 19.05mm T-FIT Clean Insulating Straight 6.35mm THK(No Tape) | 0.75" | Straight |
| ZAFCK06384-NT | ASME BPE 1.0" OD 25.40mm T-FIT Clean Insulating Straight 6.35mm THK(No Tape) | 1.0" | Straight |
| ZAFCK06385-NT | ASME BPE 1.5" OD 38.10mm T-FIT Clean Insulating Straight 6.35mm THK(No Tape) | 1.5" | Straight |
| ZAFCK06386-NT | ASME BPE 2.0" OD 50.8mm T-FIT Clean Insulating Straight 6.35mm THK(No Tape) | 2.0" | Straight |
| ZAFCK06387-NT | ASME BPE 2.5" OD 63.50mm T-FIT Clean Insulating Straight 6.35mm THK(No Tape) | 2.5" | Straight |
| ZAFCK06388-NT | ASME BPE 3.0" OD 76.20mm T-FIT Clean Insulating Straight 6.35mm THK(No Tape) | 3.0" | Straight |
| ZAFCK06522-NT | ASME BPE 4.0" OD 101.60mm T-FIT Clean Insulating Straight 6.35mm THK(No Tape) | 4.0" | Straight |
| ZAFCK05880 | ASME BPE 0.375" OD 9.53mm T-FIT Clean Insulating Elbow 6.35mm THK | 0.375" | Elbow |
| ZAFCK05814 | ASME BPE 0.5" OD 12.70mm T-FIT Clean Insulating Elbow 6.35mm THK | 0.5" | Elbow |
| ZAFCK05815 | ASME BPE 0.75" OD 19.05mm T-FIT Clean Insulating Elbow 6.35mm THK | 0.75" | Elbow |
| ZAFCK05816 | ASME BPE 1.0" OD 25.40mm T-FIT Clean Insulating Elbow 6.35mm THK | 1.0" | Elbow |
| ZAFCK05615 | ASME BPE 1.5" OD 38.10mm T-FIT Clean Insulating Elbow 6.35mm THK | 1.5" | Elbow |
| ZAFCK05616 | ASME BPE 2.0" OD 50.80mm T-FIT Clean Insulating Elbow 6.35mm THK | 2.0" | Elbow |
| ZAFCK05898 | ASME BPE 2.5" OD 63.50mm T-FIT Clean Insulating Elbow 6.35mm THK | 2.5" | Elbow |
| ZAFCK05899 | ASME BPE 3.0" OD 76.20mm T-FIT Clean Insulating Elbow 6.35mm THK | 3.0" | Elbow |
| ZAFCK06878 | ASME BPE 3.5" OD 88.90mm T-FIT Clean Insulating Elbow 6.35mm THK | 3.5" | Elbow |
| ZAFCK06523 | ASME BPE 4.0" OD 101.6mm T-FIT Clean Insulating Elbow 6.35mm THK | 4.0" | Elbow |
| ZAFCK05900 | ASME BPE 0.375" OD 9.53mm T-FIT Clean Insulating Tee 6.35mm THK | 0.375" | Tee |
| ZAFCK05743 | ASME BPE 0.5" OD 12.70mm T-FIT Clean Insulating Tee 6.35mm THK | 0.5" | Tee |
| ZAFCK05744 | ASME BPE 0.75" OD 19.05mm T-FIT Clean Insulating Tee 6.35mm THK | 0.75" | Tee |
| ZAFCK05745 | ASME BPE 1.0" OD 25.40mm T-FIT Clean Insulating Tee 6.35mm THK | 1.0" | Tee |
| ZAFCK05746 | ASME BPE 1.5" OD 38.10mm T-FIT Clean Insulating Tee 6.35mm THK | 1.5" | Tee |
| ZAFCK05747 | ASME BPE 2.0" OD 50.80mm T-FIT Clean Insulating Tee 6.35mm THK | 2.0" | Tee |
| ZAFCK05901 | ASME BPE 2.5" OD 63.50mm T-FIT Clean Insulating Tee 6.35mm THK | 2.5" | Tee |
| ZAFCK05902 | ASME BPE 3.0" OD 76.20mm T-FIT Clean Insulating Tee 6.35mm THK | 3.0" | Tee |
| ZAFCK06381-EU | ISO 1127 DN6 OD 10.2mm T-FIT Clean Insulating Straight 6.35mm THK | DN6 | Straight |
| ZAFCK06382-EU | ISO 1127 DN8 OD 13.5mm T-FIT Clean Insulating Straight 6.35mm THK | DN8 | Straight |
| ZAFCK06500 | ISO 1127 DN10 OD 17.2mm T-FIT Clean Insulating Straight 6.35mm THK | DN10 | Straight |
| ZAFCK06501 | ISO 1127 DN15 OD 21.3mm T-FIT Clean Insulating Straight 6.35mm THK | DN15 | Straight |
| ZAFCK06502 | ISO 1127 DN20 OD 26.9mm T-FIT Clean Insulating Straight 6.35mm THK | DN20 | Straight |
| ZAFCK06457 | ISO 1127 DN25 OD 33.7mm T-FIT Clean Insulating Straight 6.35mm THK | DN25 | Straight |
| ZAFCK06503 | ISO 1127 DN32 OD 42.4mm T-FIT Clean Insulating Straight 6.35mm THK | DN32 | Straight |
| ZAFCK06564 | ISO 1127 DN40 OD 48.3mm T-FIT Clean Insulating Straight 6.35mm THK | DN40 | Straight |
| ZAFCK06835 | ISO 1127 DN50 OD 60.3mm T-FIT Clean Insulating Straight 6.35mm THK | DN50 | Straight |
| ZAFCK06388-EU | ISO 1127 DN65 OD 76.1mm T-FIT Clean Insulating Straight 6.35mm THK | DN65 | Straight |

| Product Code | Description: T-FIT Clean - ASME BPE | Insulation Sizing ID | Product |
|------------------|--|----------------------|----------|
| ZAFCK06381-EU-NT | ISO 1127 DN6 OD 10.2mm T-FIT Clean Insulating Straight 6.35mm THK(No Tape) | DN6 | Straight |
| ZAFCK06382-EU-NT | ISO 1127 DN8 OD 13.5mm T-FIT Clean Insulating Straight 6.35mm THK(No Tape) | DN8 | Straight |
| ZAFCK06500-NT | ISO 1127 DN10 OD 17.2mm T-FIT Clean Insulating Straight 6.35mm THK (No Tape) | DN10 | Straight |
| ZAFCK06501-NT | ISO 1127 DN15 OD 21.3mm T-FIT Clean Insulating Straight 6.35mm THK(No Tape) | DN15 | Straight |
| ZAFCK06502-NT | ISO 1127 DN20 OD 26.9mm T-FIT Clean Insulating Straight 6.35mm THK(No Tape) | DN20 | Straight |
| ZAFCK06457-NT | ISO 1127 DN25 OD 33.7mm T-FIT Clean Insulating Straight 6.35mm THK(No Tape) | DN25 | Straight |
| ZAFCK06503-NT | ISO 1127 DN32 OD 42.4mm T-FIT Clean Insulating Straight 6.35mm THK(No Tape) | DN32 | Straight |
| ZAFCK06564-NT | ISO 1127 DN40 OD 48.3mm T-FIT Clean Insulating Straight 6.35mm THK(No Tape) | DN40 | Straight |
| ZAFCK06835-NT | ISO 1127 DN50 OD 60.3mm T-FIT Clean Insulating Straight 6.35mm THK(No Tape) | DN50 | Straight |
| ZAFCK06388-EU-NT | ISO 1127 DN65 OD 76.1mm T-FIT Clean Insulating Straight 6.35mm THK(No Tape) | DN65 | Straight |
| ZAFCK06525-NT | ISO 1127 DN80 OD 88.9mm T-FIT Clean Insulating Straight 6.35mm THK(No Tape) | DN80 | Straight |
| ZAFCK05880-EU | ISO 1127 DN6 OD 10.2mm T-FIT Clean Insulating Elbow 6.35mm THK | DN6 | Elbow |
| ZAFCK05814-EU | ISO 1127 DN8 OD 13.5mm T-FIT Clean Insulating Elbow 6.35mm THK | DN8 | Elbow |
| ZAFCK06512 | ISO 1127 DN10 OD 17.2mm T-FIT Clean Insulating Elbow 6.35mm THK | DN10 | Elbow |
| ZAFCK06513 | ISO 1127 DN15 OD 21.3mm T-FIT Clean Insulating Elbow 6.35mm THK | DN15 | Elbow |
| ZAFCK06582 | ISO 1127 DN20 OD 26.9mm T-FIT Clean Insulating Elbow 6.35mm THK | DN20 | Elbow |
| ZAFCK06515 | ISO 1127 DN25 OD 33.7mm T-FIT Clean Insulating Elbow 6.35mm THK | DN25 | Elbow |
| ZAFCK06516 | ISO 1127 DN32 OD 42.4mm T-FIT Clean Insulating Elbow 6.35mm THK | DN32 | Elbow |
| ZAFCK06517 | ISO 1127 DN40 OD 48.3mm T-FIT Clean Insulating Elbow 6.35mm THK | DN40 | Elbow |
| ZAFCK06518 | ISO 1127 DN50 OD 60.3mm T-FIT Clean Insulating Elbow 6.35mm THK | DN50 | Elbow |
| ZAFCK05899-EU | ISO 1127 DN65 OD 76.1mm T-FIT Clean Insulating Elbow 6.35mm THK | DN65 | Elbow |
| ZAFCK06816 | ISO1127 3.0"NB OD 88.90mm T-FIT Clean Insulating Elbow 6.35mm THK | DN80 | Elbow |
| ZAFCK05900-EU | ISO 1127 DN6 OD 10.2mm T-FIT Clean Insulating Tee 6.35mm THK | DN6 | Tee |
| ZAFCK05743-EU | ISO 1127 DN8 OD 13.5mm T-FIT Clean Insulating Tee 6.35mm THK | DN8 | Tee |
| ZAFCK06506 | ISO 1127 DN10 OD 17.2mm T-FIT Clean Insulating Tee 6.35mm THK | DN10 | Tee |
| ZAFCK06507 | ISO 1127 DN15 OD 21.3mm T-FIT Clean Insulating Tee 6.35mm THK | DN15 | Tee |
| ZAFCK06583 | ISO 1127 DN20 OD 26.9mm T-FIT Clean Insulating Tee 6.35mm THK | DN20 | Tee |
| ZAFCK06508 | ISO 1127 DN25 OD 33.7mm T-FIT Clean Insulating Tee 6.35mm THK | DN25 | Tee |
| ZAFCK06509 | ISO 1127 DN32 OD 42.4mm T-FIT Clean Insulating Tee 6.35mm THK | DN32 | Tee |
| ZAFCK06510 | ISO 1127 DN40 OD 48.3mm T-FIT Clean Insulating Tee 6.35mm THK | DN40 | Tee |
| ZAFCK06511 | ISO 1127 DN50 OD 60.3mm T-FIT Clean Insulating Tee 6.35mm THK | DN50 | Tee |
| ZAFCK05902-EU | ISO 1127 DN65 OD 76.1mm T-FIT Clean Insulating Tee 6.35mm THK | DN65 | Tee |
| AFCK06381-D | DIN 11850 DN8 OD 10.00mm T-FIT Clean Insulating Straight 6.35mm THK | DN8 | Straight |
| ZAFCK06382-D | DIN 11850 DN10 OD 13.00mm T-FIT Clean Insulating Straight 6.35mm THK | DN10 | Straight |
| ZAFCK06383-D | DIN 11850 DN15 OD 19.00mm T-FIT Clean Insulating Straight 6.35mm THK | DN15 | Straight |
| ZAFCK06888 | DIN 11850 DN20 OD 23.00mm T-FIT Clean Insulating Straight 6.35mm THK | DN20 | Straight |
| ZAFCK06889 | DIN 11850 DN25 OD 29.00mm T-FIT Clean Insulating Straight 6.35mm THK | DN25 | Straight |
| ZAFCK06890 | DIN 11850 DN32 OD 35.00mm T-FIT Clean Insulating Straight 6.35mm THK | DN32 | Straight |
| ZAFCK06503-D | DIN 11850 DN40 OD 41.00mm T-FIT Clean Insulating Straight 6.35mm THK | DN40 | Straight |
| ZAFCK06891 | DIN 11850 DN50 OD 53.00mm T-FIT Clean Insulating Straight 6.35mm THK | DN50 | Straight |
| ZAFCK06297 | DIN 11850 DN65 OD 70.00mm T-FIT Clean Insulating Straight 6.35mm THK | DN65 | Straight |
| ZAFCK06892 | DIN 11850 DN80 OD 85.00mm T-FIT Clean Insulating Straight 6.35mm THK | DN80 | Straight |
| ZAFCK06893 | DIN 11850 DN100 OD 104.00mm T-FIT Clean Insulating Straight 6.35mm THK | DN100 | Straight |
| ZAFCK06381-D-NT | DIN 11850 DN8 OD 10.00mm T-FIT Clean Insulating Straight 6.35mm THK (No Tape) | DN8 | Straight |
| ZAFCK06382-D-NT | DIN 11850 DN10 OD 13.00mm T-FIT Clean Insulating Straight 6.35mm THK (No Tape) | DN10 | Straight |
| ZAFCK06383-D-NT | DIN 11850 DN15 OD 19.00mm T-FIT Clean Insulating Straight 6.35mm THK (No Tape) | DN15 | Straight |
| ZAFCK06888-NT | DIN 11850 DN20 OD 23.00mm T-FIT Clean Insulating Straight 6.35mm THK (No Tape) | DN20 | Straight |
| ZAFCK06889-NT | DIN 11850 DN25 OD 29.00mm T-FIT Clean Insulating Straight 6.35mm THK (No Tape) | DN25 | Straight |
| ZAFCK06890-NT | DIN 11850 DN32 OD 35.00mm T-FIT Clean Insulating Straight 6.35mm THK (No Tape) | DN32 | Straight |

| Product Code | Description: T-FIT Clean - ASME BPE | Insulation Sizing ID | Product |
|---------------|--|----------------------|----------|
| ZAFCK06891-NT | DIN 11850 DN50 OD 53.00mm T-FIT Clean Insulating Straight 6.35mm THK (No Tape) | DN50 | Straight |
| ZAFCK06297-NT | DIN 11850 DN65 OD 70.00mm T-FIT Clean Insulating Straight 6.35mm THK (No Tape) | DN65 | Straight |
| ZAFCK06892-NT | DIN 11850 DN80 OD 85.00mm T-FIT Clean Insulating Straight 6.35mm THK (No Tape) | DN80 | Straight |
| ZAFCK05880-D | DIN 11850 DN8 OD 10.00mm T-FIT Clean Insulating Elbow 6.35mm THK | DN8 | Elbow |
| ZAFCK05814-D | DIN 11850 DN10 OD 13.00mm T-FIT Clean Insulating Elbow 6.35mm THK | DN10 | Elbow |
| ZAFCK05815-D | DIN 11850 DN15 OD 19.00mm T-FIT Clean Insulating Elbow 6.35mm THK | DN15 | Elbow |
| ZAFCK06874 | DIN 11850 DN20 OD 23.00mm T-FIT Clean Insulating Elbow 6.35mm THK | DN20 | Elbow |
| ZAFCK06875 | DIN 11850 DN25 OD 29.00mm T-FIT Clean Insulating Elbow 6.35mm THK | DN25 | Elbow |
| ZAFCK06876 | DIN 11850 DN32 OD 35.00mm T-FIT Clean Insulating Elbow 6.35mm THK | DN32 | Elbow |
| ZAFCK06516-D | DIN 11850 DN40 OD 41.00mm T-FIT Clean Insulating Elbow 6.35mm THK | DN40 | Elbow |
| ZAFCK06877 | DIN 11850 DN50 OD 53.00mm T-FIT Clean Insulating Elbow 6.35mm THK | DN50 | Elbow |
| ZAFCK05238 | DIN 11850 DN65 OD 70.00mm T-FIT Clean Insulating Elbow 6.35mm THK | DN65 | Elbow |
| ZAFCK06878-D | DIN 11850 DN80 OD 85.00mm T-FIT Clean Insulating Elbow 6.35mm THK | DN80 | Elbow |
| ZAFCK05743-D | DIN 11850 DN10 OD 13.00mm T-FIT Clean Insulating Tee 6.35mm THK | DN10 | Tee |
| ZAFCK05744-D | DIN 11850 DN15 OD 19.00mm T-FIT Clean Insulating Tee 6.35mm THK | DN15 | Tee |
| ZAFCK06509-D | DIN 11850 DN40 OD 41.00mm T-FIT Clean Insulating Tee 6.35mm THK | DN40 | Tee |
| ZAFCK05900-D | DIN 11850 DN8 OD 10.00mm T-FIT Clean Insulating Tee 6.35mm THK | DN8 | Tee |
| ZAFCK06879 | DIN 11850 DN20 OD 23.00mm T-FIT Clean Insulating Tee 6.35mm THK | DN20 | Tee |
| ZAFCK06880 | DIN 11850 DN25 OD 29.00mm T-FIT Clean Insulating Tee 6.35mm THK | DN25 | Tee |
| ZAFCK06881 | DIN 11850 DN32 OD 35.00mm T-FIT Clean Insulating Tee 6.35mm THK | DN32 | Tee |
| ZAFCK06882 | DIN 11850 DN50 OD 53.00mm T-FIT Clean Insulating Tee 6.35mm THK | DN50 | Tee |
| ZAFCK06883 | DIN 11850 DN65 OD 70.00mm T-FIT Clean Insulating Tee 6.35mm THK | DN65 | Tee |

Exclusion of Liability

Any information contained in this document is, to the best of the knowledge and belief of Zotefoams plc and of Zotefoams Inc. (together herein referred to as ZOTEFOAMS), accurate. Any liability on the part of ZOTEFOAMS or any subsidiary or holding company of ZOTEFOAMS for any loss, damage, costs or expenses directly or indirectly arising out of the use of such information or the use, application, adaptation or processing of any goods, materials or products described herein is, save as provided in ZOTEFOAMS' conditions of sale ("Conditions of Sale"), hereby excluded to the fullest extent permitted by law. Where ZOTEFOAMS' goods or materials are to be used in conjunction with other goods or materials, it is the responsibility of the user to obtain from the manufacturers or suppliers of the other goods or materials all technical data and other properties relating to those other goods or materials. Save as provided in the Conditions of Sale no liability can be accepted in respect of the use of ZOTEFOAMS' goods or materials in conjunction with any other goods or materials.

Where ZOTEFOAMS' goods or materials are likely to come into contact with foodstuffs or pharmaceuticals, whether directly or indirectly, or are likely to be used in the manufacture of toys, prior written confirmation of compliance with relevant legislative or regulatory standards for those applications may be requested from ZOTEFOAMS, if appropriate. Save as provided in the Conditions of Sale no liability can be accepted for any damage, loss or injury directly or indirectly arising out of any failure by the user to obtain such confirmation or to observe any recommendations given by or on behalf of ZOTEFOAMS.

ZOTEFOAMS MAKES NO WARRANTIES EXPRESS OR IMPLIED, EXCEPT TO THE EXTENT SET OUT IN THE CONDITIONS OF SALE, AND HEREBY SPECIFICALLY EXCLUDES ANY IMPLIED WARRANTY OF MERCHANTABILITY OR FITNESS FOR A PARTICULAR PURPOSE WITH RESPECT TO ANY GOODS, MATERIALS OR PRODUCTS DESCRIBED HEREIN.

Zotefoams plc Management systems are covered by the following:



Quality
FM 01870
ISO 9001:2015



Safety
OHS 52538
ISO 45001:2018



Environment
EMS 36270
ISO 14001:2015

Zotefoams Inc.

55 Precision Drive
Walton KY, 41094 USA
Tel: +1 (0) 859 371 4025
Free: (800) 362-8358 (US Only)
Email: t-fitusa@zotefoams.com

Zotefoams plc

675 Mitcham Road
Croydon, Surrey
CR9 3AL, United Kingdom
Tel: +44 (0) 20 8664 1600
Email: t-fitsales@zotefoams.com

T-FIT Insulation Solutions India Private Limited

810 Shapath V, S.G. Highway
Ahmedabad, Gujarat, 380015
Tel: +91 (0) 7433946464
Email: t-fitindia@zotefoams.com

Zotefoams T-FIT Material Technology (Kunshan) Co., Ltd

181 Huanlou Road, Development Zone,
Kunshan City, Jiangsu Pr. China 215333
Tel: +86 (0) 512 5012 6001-8001
Email: t-fitchina@zotefoams.com

T-FIT® and ZOTEK®
are registered trademarks
of Zotefoams plc.
All rights reserved.
Issue 2
Revision 9

If you would like more information visit our website www.zotefoams.com